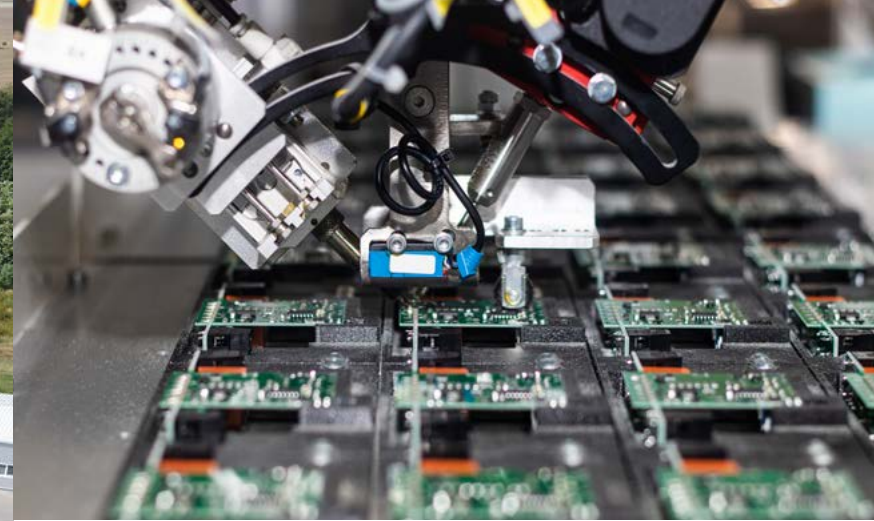


# Board & Cases

for a successful life presentation







## ELKO EP | Company introduction

ELKO EP have been your partner in the field for 30 years, developing and manufacturing the highest quality electronic devices for electroinstallation as well as Smart System for Residential and Building automation.

- ① Training center
- ② Warehouse
- ③ Testing lab
- ④ Research & Development centre
- ⑤ Administration building
- ⑥ Manufacturing hall

## If you want to know more...

ELKO EP employs more than 350 people across 11 foreign branches and exports its products to more than seventy countries.

Company of the Year, Visionary of the Year, Superbrands and Global Exporter of the Year are just some of the awards we have received throughout the years as we consistently strive to move forward in the field of innovation and development.

Millions of relays, thousands of smart homes, hundreds of buildings and many satisfied customers - This is ELKO EP; a traditional company based in the center of Europe, where own development, production, logistics, and service are at the forefront of our focus.



Czech Business Superbrands



Accredited testing laboratory



**30 000 +**  
iNELS  
installations



**30 000 000 +**  
manufactured  
products



**R&D**  
continuously  
innovative



**SUPPORT**  
24 / 7 / 365



**MANUFACTURER**  
fully automated  
complete proces



**5**  
Years  
guarancy



**Czech**  
made



**Customization**  
welcome



**350**  
employees  
in holding



**WORLDWIDE**  
11 branches  
6 franchises  
70 export countries





www.inels.cz

**iNELS**

**WIRELESS | SMART ELECTRO INSTALLATION**

**LIGHTS**

**CONTROLLERS**

**HVAC**

**BUS | SMART WIRED ELECTRO-INSTALLATION**

**CENTRAL UNITS**

**CONTROLLERS CLASSIC**

**DIMMING**

**SWITCHING**

**BUS | SMART WIRED ELECTRO-INSTALLATION**

**INTEGRATION**

**CONTROLLERS GLASS**

**HVAC CONTROL**

**I/O UNITS**

**LARA AUDIO**

**1** | **WIRELESS | SMART ELECTRO INSTALLATION**

**LIGHTS**

**CONTROLLERS**

**HVAC**

**iNELS**

**2** | **WIRELESS | SMART ELECTRO INSTALLATION**

**SHADING**

**DETECTORS**

**SWITCHING**

**OUTDOOR**

**iNELS**

**iSS Wireless 1**  
**iSS Wireless 2**

Introducing our latest innovation, the double panel wireless with product for home.

A wireless system refers to a network of devices or components that communicate and transfer data through electromagnetic waves, such as radio frequencies or infrared signals, instead of physical connections. Wireless systems can include a variety of applications, such as wireless internet, mobile phones, wireless sensors, and wireless home automation systems. These systems provide convenience, flexibility, and mobility, and are becoming increasingly popular in both personal and professional settings.

On this panel you can see a sample of options for simplifying and making your home or your customers' home more comfortable.

**1**  
**80922\_1 | 24 Kg**

**2**  
**80922\_2 | 24 Kg**







**1**

## RELAYS

UL LISTED CUL US CUL US

### TWILIGHT SWITCHES

- ANALOG - DIGITAL

**DIMMERS**

**POWER SUPPLIES**

- SWITCHING - ANALOG

**2**

## RELAYS

UL LISTED CUL US CUL US

### TIME RELAYS

- MULTIFUNCTION

**TIME RELAYS**

- SPECIAL

**TIME SWITCHES**

- DIGITAL

**ANOTHER AVAILABLE TYPES**

- STAR-DELTA TIMER
- SINGLE FUNCTION RELAYS
- ENERGY-SAVING TIME RELAY
- EMERGENCY LIGHT TESTER

## RELAYS ISE 1 RELAYS ISE 2

The double panel wired product is a versatile and efficient solution for view options controlling different types of electrical devices.

A wired system is a technology infrastructure that uses physical cables to connect devices and transmit information. It is commonly used in networking, security, and audio systems. This system is also less prone to interference from other electromagnetic sources and can transmit larger amounts of data over long distances.

Wired systems offer greater reliability and security compared to wireless systems, but they require more installation time and can be more expensive.

**TIME SWITCHES**

- ANALOG

**STAIRCASE SWITCHES**

**MEMORY & BISTABLE RELAYS**

- ELECTRONIC - ELECTROMECHANICAL

**AUXILIARY RELAYS & CONTACTORS**

**CONTROLLING & SIGNALING MODULES**

**CURRENT RELAYS**

**LIQUID RELAYS**

**VOLTAGE RELAYS**

- ANALOG - DIGITAL

**TEMPERATURE RELAYS**

- ANALOG - DIGITAL

**1**  
80941 | 9,5 Kg

**2**  
80942 | 9,5 Kg

**1**

## INSPINIA

Inspiration for your living space.

### TOUCH PANELS

INVSQ INBISQ

Android 6.0, 5 Point Multi Touch, POE Gigabit Ethernet, 2x 2W Speakers, Microphone, 5x Digital Input, 2x Digital Output, Temperature Sensor, Humidity Sensor, 2x Extension Add-On Ports, 2.4 GHz Antenna

4 IPS CTP, POE Ethernet, Humidity Sensor, 1x Extension Add-On Ports

### METAL FRAME OPTIONS

### ADD-ONS

KNX, Modbus, Bluetooth, ZigBee, Gticino, VRV & VRF SYSTEMS

SAMSUNG, DAIKIN, MITSUBISHI ELECTRIC, HITACHI, TOSHIBA, LG, Aidea, CHIGO, Panasonic

www.inspinia.eu

**2**

## INSPINIA

Inspiration for your living space.

### AIRCON INTERFACE

BUS Port, VRV & VRF External Sensor, VRV & VRF PORT, SACI, AIRCON, Ethernet, DAIKIN, SAMSUNG, MITSUBISHI ELECTRIC

KNX, Modbus

### COMPATIBLE WITH

INVSQ, INBISQ, INBISQ, INVSQ, MN-SRV

### SERVERS

INVSQ, Ethernet, 1" OLED LCD, 2x Extension Add-On Ports

IP, RS-485, Modbus, ZigBee, KNX

### INTEGRATION

SKY THINGS

MULTI-PROTOCOL, MONITORING, LOG-C, CONTROL, SCHEDULE, REPORTS, ONLINE CONFIGURATION, ONLINE UPDATE

SAI7, C-7, IP Camera

www.inspinia.eu

## INSPINIA 1 INSPINIA 2

The Inspinia Touch Panels are designed to bring advanced smart home and building automation to your fingertips. These panels combine high-end technology with sophisticated design, making them ideal for modern living spaces. Available in various finishes such as black, silver, and gold, the Inspinia panels are crafted to complement any interior decor.

Standard interfaces include LAN RJ45, digital inputs and outputs, and optional interfaces for KNX, Zigbee, and Modbus, ensuring compatibility with a wide range of smart home devices. The Inspinia Touch Panels offer a seamless blend of style and functionality, making them a valuable addition to any smart home or building automation system.



**LATINA & LOGUS<sup>90</sup>**  
**QUADRA & POLO**

Logus button controllers are compact and user-friendly devices used for various operations in industrial, commercial and homes environments.

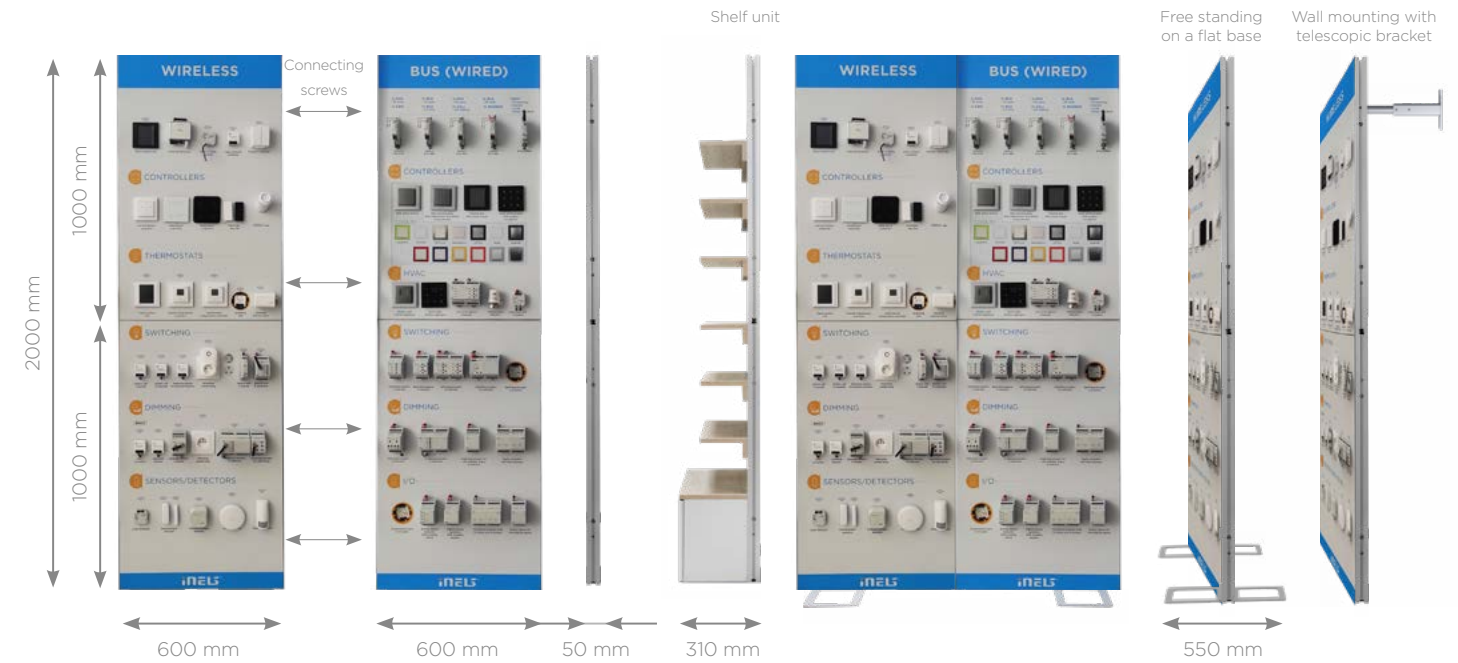
These controllers allow the operator to control machinery or lighting, activate alarms, or trigger other systems with the push of a button or by a simple touch. They are made of robust materials and can withstand harsh environmental conditions. Logus button controllers are designed for easy installation and can be customized to fit the specific needs of different applications.

With its versatile and powerful functionality, the Logus controllers are an essential component for modern building management.

**1**  
**80903 | 18 Kg**

**2**  
**80904 | 18 Kg**

Panel based modular system



Example of montage

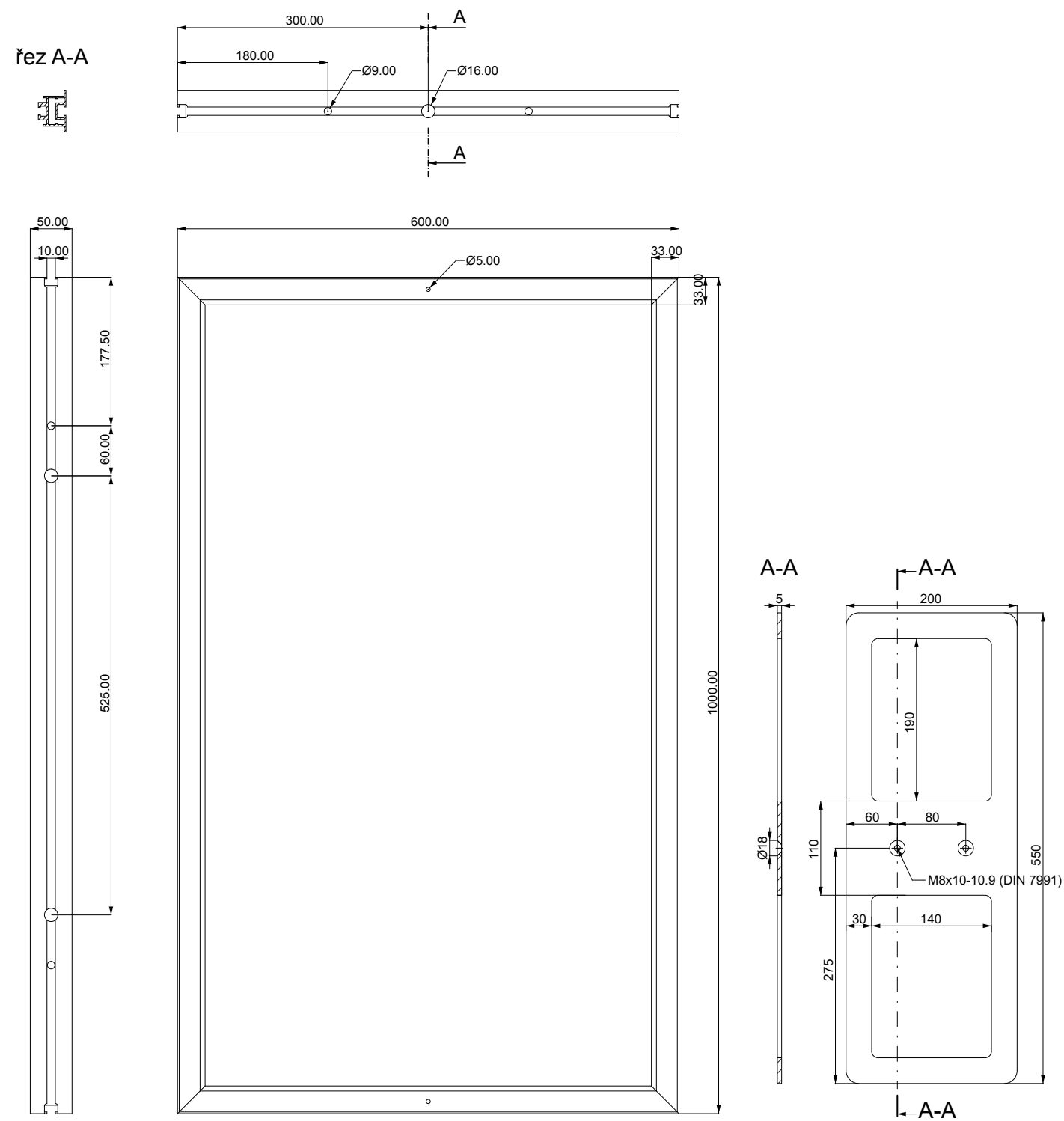
Mounting at right angles using a square column

Mounting at any angles using an articulated column



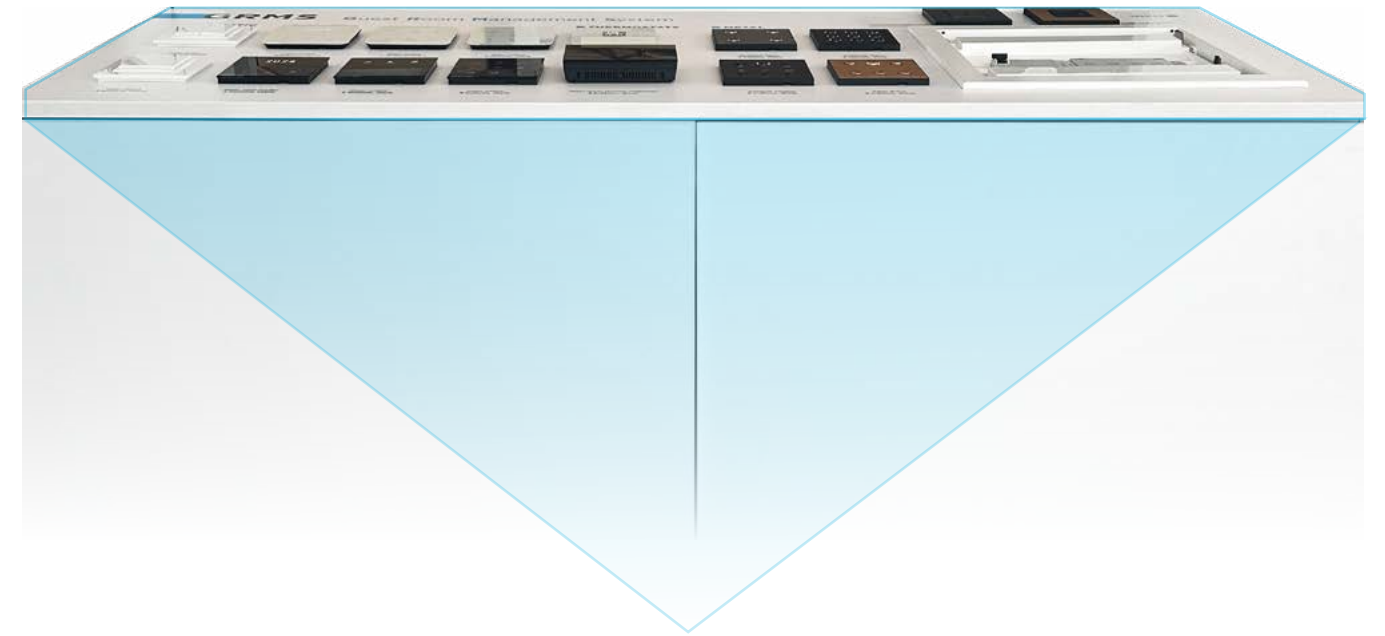


Base modul dimension  
frame scale 1:5



The panels are arranged in a vertical stack, with one panel positioned directly above the other, and are secured using a metal frame-work. For freestanding panels, structural supports are installed to ensure stability.





- signalling board
  - control board
  - cabinet
- > set

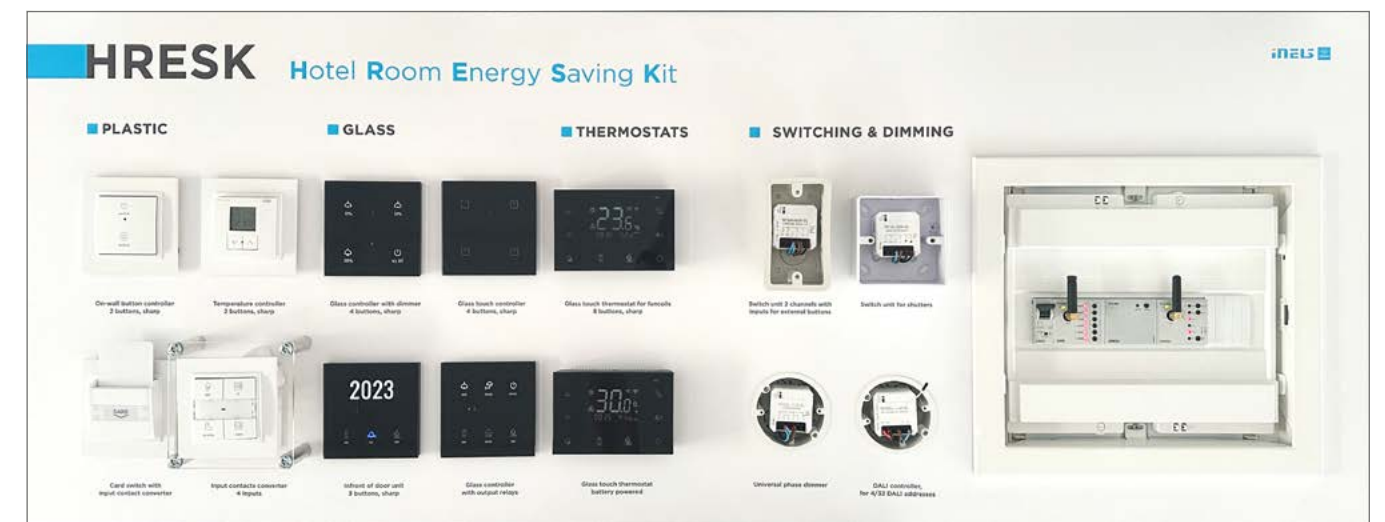
### iNELS GRMS ISE 2024

set 80931

Discover the elegance of control with iNELS GRMS, the ultimate solution for guest room management. Our system offers intuitive touch panels that blend seamlessly into any room design, providing guests with effortless control over lighting, climate, and entertainment.

The iNELS GRMS products are not just about functionality; they are about creating an experience that resonates with the modern traveler's desire for comfort, control, and luxury.





- signalling board
  - control board
  - cabinet
- set

## INELS HRESK ISE 2024

set 80932

HRESK offers a suite of devices that control lighting, temperature, and courtesy functions, all communicating wirelessly using a radio-protocol tailored for building automation. This innovative approach allows for a swift and clean installation process, elevating the hotel's electrical infrastructure to a new level of sophistication.

The HRESK system is not just a technological upgrade; it's a commitment to enhancing the guest experience through intuitive control, design elegance, and operational efficiency.





135 cm

52 cm

### iNELS Wireless ISE 2024

80928 | 13 Kg

iNELS, a leader in smart home and building automation, presents a suite of wireless products designed to revolutionize hotel room management. These solutions offer a seamless blend of functionality, design, and innovation, ensuring a superior guest experience and operational efficiency.

iNELS wireless products can be installed without any demolition or structural changes, making them ideal for both new constructions and existing buildings.



### iNELS BUS ISE 2024

80929 | 11 Kg

The iNELS BUS system is a sophisticated network infrastructure that forms the foundation of smart building automation. It connects all devices within a building, from sensors and actuators to controllers and central units, through a robust wired bus network. This system is ideal for larger residential units, commercial buildings, and any application where comprehensive

automation is essential. The iNELS BUS system is not just a product; it's a commitment to optimized building management, occupant comfort, and safety. It provides actionable insights for efficient operation, making it an indispensable part of today's smart buildings.



### iNELS Integration ISE 2024

80930 | 15 Kg

The iNELS Integration Board facilitates the integration of iNELS smart home and building solutions with third-party systems. It's designed to bridge the gap between iNELS devices and other platforms, such as Home Assistant, enabling a seamless and cohesive smart environment. By implementing the iNELS Integration Board, users can enjoy the benefits of a

comprehensive smart home system that is both flexible and user-friendly, making it an ideal choice for those looking to enhance their smart home or building automation.



### iNELS Matter ISE 2024

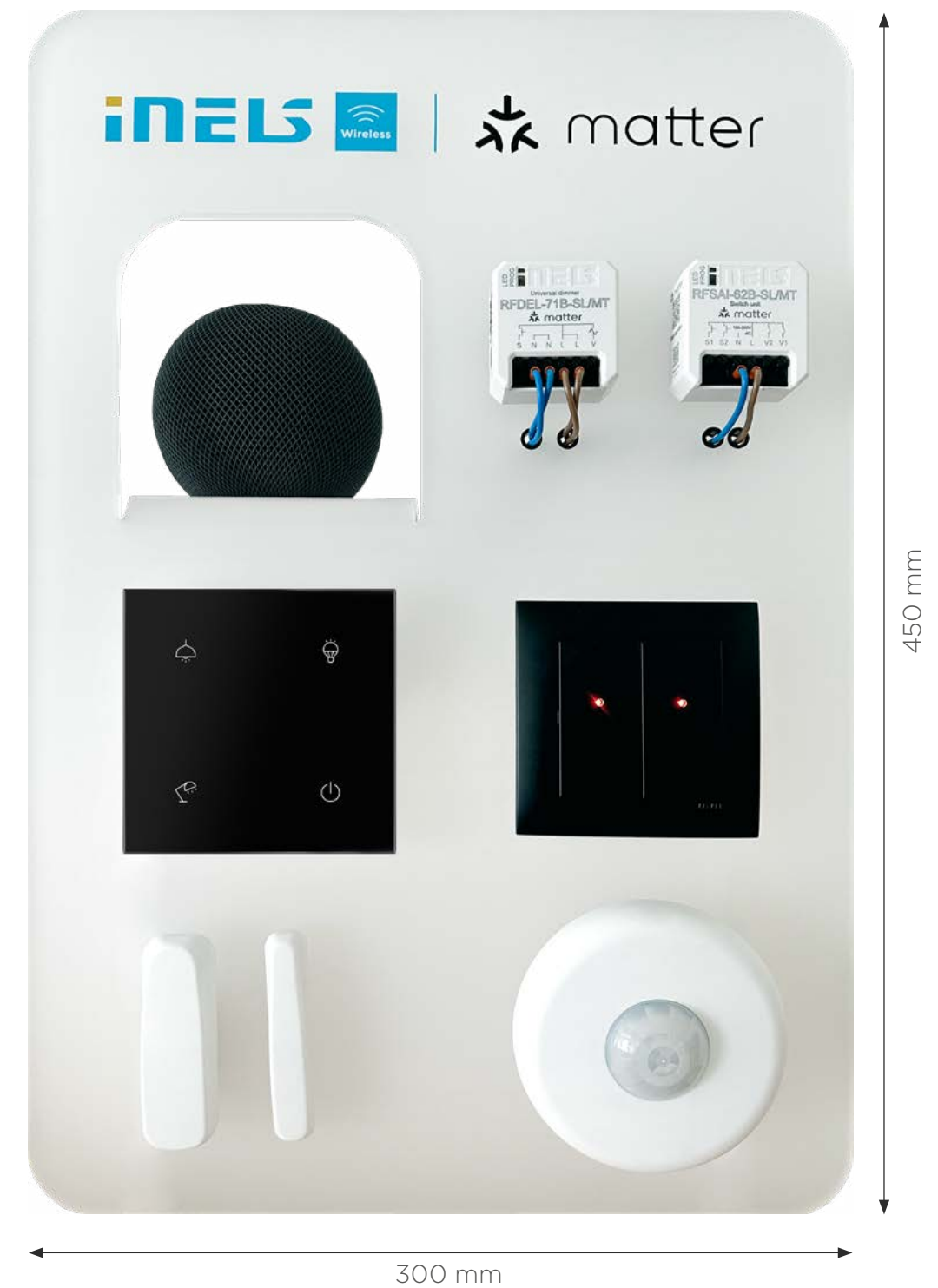
80940

Matter is a universal standard designed to unify the control of various smart devices, ensuring seamless communication across different brands and ecosystems.

ELKO EP's Matter-enabled products include a range of controllers, switches, dimmers, and sensors. For example, their RFMD-200/MT motion detector is designed for ceiling in-

stallation and can detect movement to control lighting and other devices. Another product, the RFGB-40/MT glass touch controller, offers an elegant interface for managing multiple smart home functions.





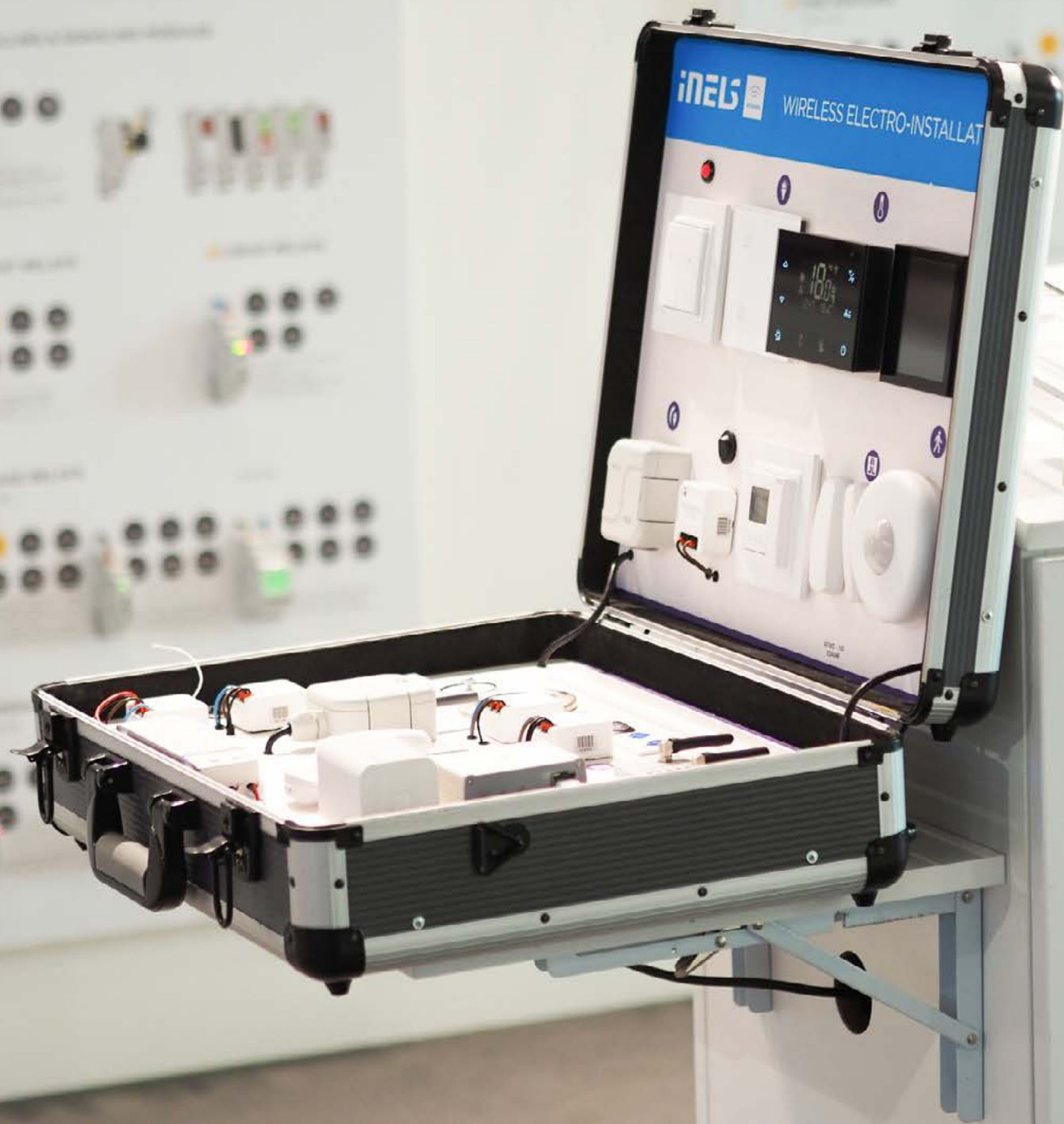
**iNELS wireless & matter 2024**

**? | 300x450mm | ? Kg**

The plexiglass panel showcases the seamless integration of iNELS Wireless and Matter products. This setup demonstrates advanced home automation where devices communicate efficiently. The iNELS Wireless system, known for its flexible

and easy installation, connects various sensors, controllers, and performance units wirelessly. This combination on the plexiglass panel highlights the future of smart home technology, offering both reliability and versatility.





### **iNELS BUS STARTER KIT 2024**

**80944 | 38x48x15 cm | 8 Kg**

The iNELS BUS STARTER KIT is a meticulously crafted package that serves as the perfect introduction to the iNELS BUS system, a sophisticated wired solution for smart home and building automation. This starter kit is specifically designed

for those embarking on new construction projects or large-scale renovations, providing a solid foundation in the realm of intelligent electroinstallation.





## iNELS WIRELESS STARTER KIT 2024

80946 | 38x48x15 cm | 8 Kg

Is designed to provide a simple and efficient entry point into smart home automation. This kit includes essential components to help you start automating and controlling various aspects of

your home environment without the need for extensive wiring or complex installations.



## iNELS WIRELESS 2023

80863 | 15x50x40 cm | 8 Kg

The instructional suitcase for electro technic is a comprehensive educational tool designed for students and professionals in the field of electrical engineering. Suitcase contains wireless touch controllers, sensors, detectors, thermostats, actors, switches and many others.

With this suitcase, students and professionals can gain a deeper understanding of electrical engineering, and improve their skills in designing, troubleshooting, and repairing electrical systems.





## iNELS HRESK 2024

The iNELS HRESK case refers to the innovative solution provided by ELKO EP s.r.o. for existing hotels that wish to upgrade

their room management systems to a wireless technology without the need for extensive refurbishment.



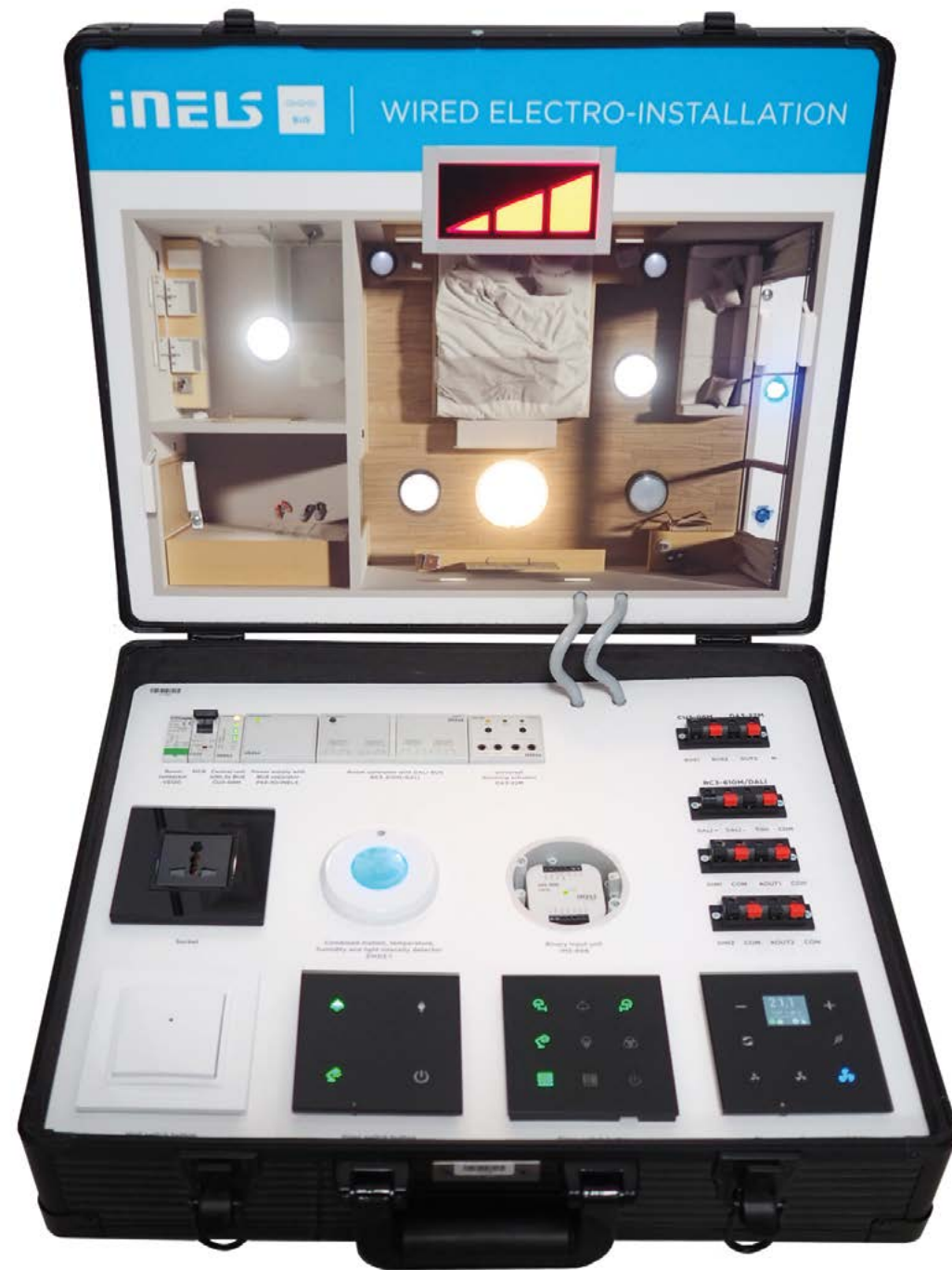
## iNELS GRMS 2023

GRMS is an innovative electronic system that automates various functions in guest rooms, such as lighting, temperature, curtains, and security, to improve guest experience and minimize operational costs. Suitcase contains of various sensors, devices, and control panels connected through a network to a central control unit.

80921 | 15x50x40 cm | 7 Kg

The system also enables hotel managers to monitor and manage guest rooms remotely, schedule cleaning and maintenance tasks, and generate data analytics to optimize resource utilization. The GRMS requires skilled electro-technic engineers to install, configure, and maintain the system to ensure its reliability and effectiveness.





## iNELS BUS 2023

The wired electro technic instructional case is designed to provide hands-on training for students and professionals in the field of electrical engineering. Suitcase contains wired room control using switches, controllers and actors. Users can experiment with different wiring and component placements, allowing them to learn about electrical theory and practical applications.

80923 | 15x50x40 cm | 7,5 Kg

The case is durable and compact, making it suitable for both individual use and classroom instruction. Overall, the wired electro technic instructional case is an excellent tool for anyone looking to learn more about electrical engineering.



## iNELS LOGUS<sup>90</sup>

We offers a range of stylish and functional switches, sockets, and controllers designed to enhance both residential and commercial spaces. The LOGUS90 line is known for its high-quality

90909 | 35x10x44 cm | 2 Kg

materials and elegant design, making it a popular choice for modern interiors.





● **Headquarters**

ELKO EP Holding SE, Czech Republic

---

● **Europe**

ELKO EP Balkan d.o.o  
ELKO EP Bulgaria OOD  
ELKO EP Germany GmbH  
ELKO EP Hungary Kft.  
ELKO EP POLAND Sp. z o.o.  
ELKO EP SLOVAKIA, s.r.o.  
ELKO EP UK Ltd.  
ELKO EP UKRAINE LLC

● **Africa & Middle East**

ELKO EP Egypt LLC  
ELKO EP Kuwait Ltd.  
ELKO EP MEA LLC  
ELKO EP Saudi Arabia Ltd.  
ELKO EP South Africa PTY Ltd.

● **America**

ELKO EP North America LLC

---



**ELKO EP, s.r.o.** | Palackeho 493 | 769 01 Holesov, Vsetuly | Czech Republic

phone: +420 573 514 221 | fax: +420 573 514 227 | [elko@elkoep.com](mailto:elko@elkoep.com) | [www.elkoep.com](http://www.elkoep.com)

Published: 2024 | Modifications or amendments reserved | © Copyright ELKO EP, s.r.o. | 1<sup>st</sup> edition